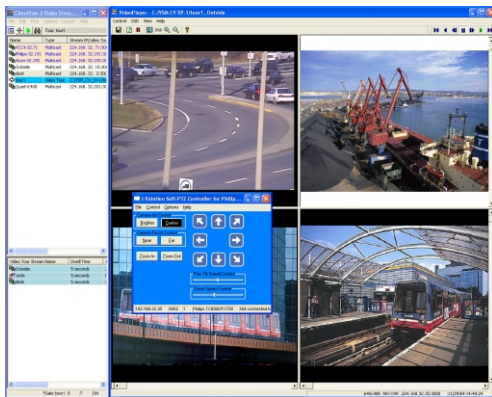


# ClientVue™ MVT

## Distributed Video Access

The i-Volution series of Video-over-IP products delivers outstanding performance for advanced surveillance applications requiring high resolution, full motion video. ClientVue MVT, a software-based viewing application, decodes i-Volution MPEG video streams over standard IP networks for display on PC workstation. Users have the flexibility to select any video stream from any location within the network, for display/recording on their desktop or portable PC. ClientVue MVT comprises a real-time MPEG video player and intuitive Video Stream Manager for advanced video selection, management and control.



**ClientVue MVT**  
Multi-Video Desktop Viewer & Touring

- i-Volution MPEG-1 & MPEG-2 Video Decoding
- Full Screen Viewing with Dual Monitor Support
- Intuitive Video Selection Menu
- On-Demand Video Switching
- User-defined Video Tours with Bit Map Insertion
- Drag & Drop Video Controls
- On-Screen-Display with Text & Graphics Overlay
- Support of i-Volution Video Streams with OSD
- Digital Video Pan & Zoom
- Integral Camera PTZ Support with Joystick Control
- Local Recording and Playback
- Optional Support for International Character Sets

### i-Volution Video-over-IP Products:

- i1000 Encoders & Decoders
- i1200 Multimedia Encoder/Decoder
- i1400 Quadrimedia Encoders
- i4000 Series Encoders
- VSG & VSG-L Video Surveillance Gateway
- i-Volution NMS

### Applications

ClientVue MVT delivers high quality video to your PC over standard IP networks. Images are decoded in real-time providing full motion DVD quality video for centralized and/or distributed surveillance applications including incident management, central/remote monitoring and security access control.

ClientVue MVT can also be used as an effective management tool for monitoring day-to-day business operations, as well as assisting in the provisioning and maintenance of distributed network video systems.

### Distributed Video Access

ClientVue MVT eliminates the need for traditional NTSC/PAL monitors by providing high quality video to network PC's, regardless of location. This flexibility is ideal for distributed monitoring of video from any location within the IP network.

### MPEG Video Player - Multiple Video Support

The ClientVue MVT Video Player is optimized for viewing multiple real-time MPEG-2 images on your desktop. The number of viewing windows is limited by the performance of the PC and its video adapter card. ClientVue MVT supports from 4 to 16 concurrent video streams pending the network application.

### Video Touring/Sequencing

Video sources within a network often exceed the number of surveillance monitors available. As such, Video Touring or Sequencing is the traditional methodology used for viewing more video sources than available displays. ClientVue MVT provides maximum flexibility via support of user-programmable Video Tours with variable dwell times. This advanced capability allows for an unlimited number of video tours and video sources to be supported.

### Video Stream Manager - Video Selection & Control

Using the Video Stream Manager, the network administrator can customize the play lists of video sources (cameras) for each user, to control access if required. IP Multicast support ensures that multiple authorized users can view video concurrently.

### Video Recording & Playback

ClientVue MVT has integral recording capability to allow real-time viewing and simultaneous digital archiving of video, based on time, file size, or continuous recording. Video can be recorded locally or to a network hard drive. Recorded videos may be replayed on the local PC or exported to another PC for distributed viewing.

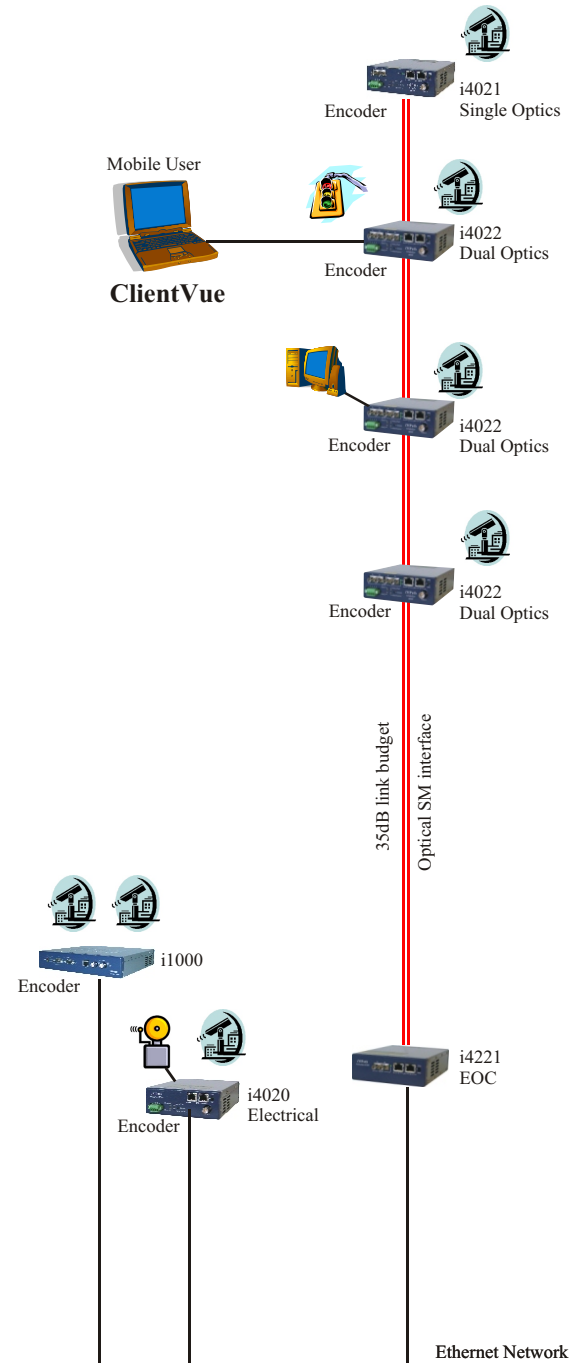
### High Performance - Low Latency

ClientVue MVT is optimized for MPEG-2 to provide high resolution, full motion video to the desktop. ClientVue MVT leverages the inherent benefits of IP networks to allow video streams to be displayed with minimal latency.

### Standards Compliant

ClientVue is built on Open Standards in support of iMPath Networks' ongoing commitment to multivendor interoperability.

## i-Volution Product Series



### Network Interface

Via PC Ethernet NIC - Full Duplex

### Multicast Support

IGMPv2

### Network Video

#### Format

MPEG-1 (ISO/IEC11172-2) and MPEG-2 (ISO/IEC 13818-2)MP@ML

#### Bit Rate

128 Kbps - 12 Mbps

#### Resolution

NTSC PAL

#### Full

720 x 480 720 x 576

#### HHR

352 x 480 352 x 576

#### SIF

352 x 240 352 x 288

#### QSIF

192 x 128 160 x 128

#### Latency

< 400ms

### Video Decoding Parameters

User selectable I, IP, or IPB frames

### Video Player Window Resolution

Auto adjusts to incoming video stream resolution or User Selectable

### Maximum Number of Videos (4-16)

PC and/or software license dependant. Typically, 4 video streams at full resolution @ 6 Mbps can be decoded on the recommended PC platform. Available options support from 4 to 16 concurrent video streams

### Video Recording

Continuous loop, or User defined.

#### Video File Control

User selectable limits file size and recording time

#### Video Playback

MPEG-2 with (.mpg, .mpeg) file extension

### Video Touring / Sequencing

Unlimited

### On Screen Display

Customizable Video Player OSD - 4 lines of user text plus time and date stamp  
Enable/Disable display of i-Volution encoded OSD.

### Digital Pan and Zoom

Digital pan and zoom within the image window using mouse or keyboard commands.

### Drag and Drop Video Control

Start video or tours via simple Drag and Drop from live video play list or recorded video file name into windows

### Integral Camera PTZ Support

Philips TC8560/TC700; Pelco D; Vicon; Ultrak; COHU. Other protocols can be integrated on request

### Integral Joystick PTZ Control

Compatible with standard USB joystick

### Minimum PC Specifications for Multi-Video Support

#### Processor

Intel Pentium IV 2.8 GHz with hyper threading

#### Motherboard

Support AGP 4X or higher

#### Memory

512 MB RAM or better

#### Hard Disk Capacity

Minimum (free) hard disk space: 3MB

#### CD-ROM

16X or better

#### Monitor

SVGA - Minimum Resolution: 1024 x 768 pixels

#### Video Card

DirectX 9.0 with 3D acceleration H/W.

#### Input Devices

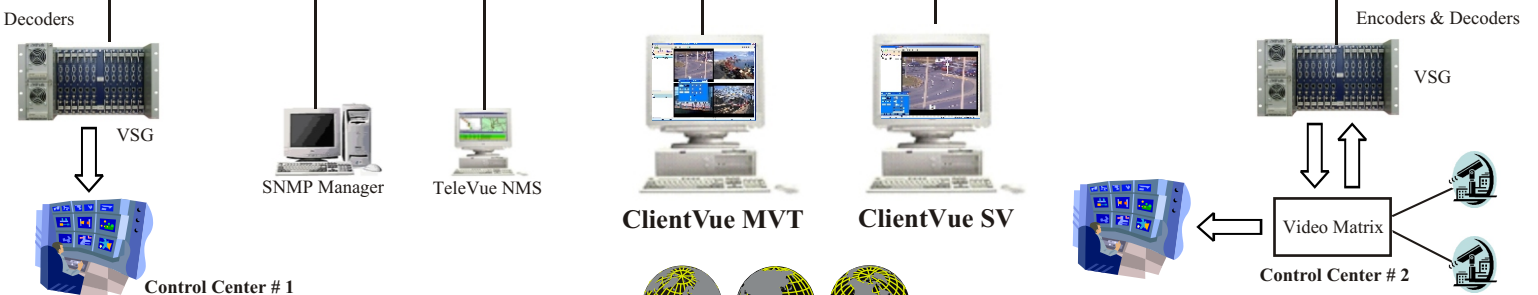
PS/2 Mouse or equivalent

#### Network Interface

Ethernet - 10/100 Mbps (Full Duplex)

#### Operating System

Windows 2000/XP with **DirectX® 9.0b** or later installed



### Global Headquarters

1431 Merivale Road  
Ottawa, Ontario • Canada • K2E 1B9  
Phone: 1 613 226 4000  
Fax: 1 613 226 4602

For regional contacts check our web site at [www.impathnetworks.com](http://www.impathnetworks.com)

Copyright 2005 iMPath Networks Inc. • iMPath is a registered trademark of iMPath Networks Inc. TransPorter, TeleVue, ClientVue and i-Volution are trademarks of iMPath Networks Inc. All other trademarks are those of their respective owners. • Printed in Canada. • 01/05 • Specifications subject to change without notice or obligation.

MBR-145-004

[www.impathnetworks.com](http://www.impathnetworks.com)

000-000519-000 RevD011