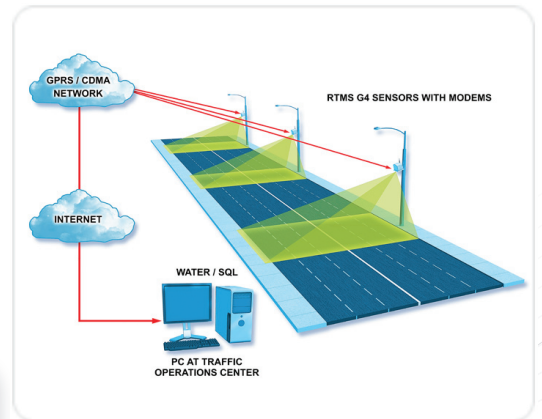


WATER

RTMS WATER (Wide Area Traffic Event Reporting) provides real-time traffic measurement and data collection over a wide area. An enterprise-level system capable of monitoring traffic in thousands of locations. Traffic is measured by multiple sideloaded RTMS™ data collection stations in a specific area. Data is then typically sent by CDMA/GPRS modem or concentrated by a Wireless Cluster Hub and cost-effectively transmitted to a Traffic Operations Center (TOC) for storage in a real-time SQL database.

The affordable WATER system is not only unparalleled for reliability and accuracy in all weather conditions and for large scale projects, it is also quick to install with no lane closures and no ongoing maintenance required. Suitable for both highway and urban traffic management applications.



APPLICATIONS

- > Corridor traffic management
- > ATIS Advanced Traveler Information Systems and online speed maps
- > ATMS and incident detection
- > Traffic counting and monitoring
- > Alarm and special events reporting
- > Travel time information
- > Quasi-adaptive signal control

FEATURES

- > Accurate measurements of Volume, Occupancy, Classification and Speed on 8 separate lanes per station
- > AC, battery or solar power options
- > Unmatched flexibility: a relocatable and scalable system that expands by adding stations
- > DSS Wireless Cluster Hubs, serial, cellular and TCP/IP communications mean a simplified, affordable network
- > Real-time TOC/SQL database stores data and network sensor configuration from thousands of stations
- > Mixed communications environment: RF, serial, and TCP/IP
- > Simple TOC software for SQL database interface, configuration and diagnosis as well as speed map and travel time information

BENEFITS

- > Speedy installation on existing structures with no traffic disruptions
- > Exceptional reliability with no maintenance required
- > Low life-cycle cost
- > No scheduled maintenance required
- > Supports public or private wireless networks
- > Unparalleled local support

**Image Sensing Systems, Inc.
Headquarters**

500 Spruce Tree Centre
1600 University Avenue West
St. Paul, Minnesota 55104-3825 USA

Phone +1.651.603.7700
Fax +1.651.603.7795
stpaul@imagesensing.com
imagesensing.com

**Image Sensing Systems
Canada Limited**

150 Bridgeland Ave, Suite 204
Toronto, Ontario M6A 1Z5
Canada

Phone +1.416.785.9248
Fax +1.416.785.9332
info@imagesensingca.com
imagesensingca.com

Flow Traffic Limited

Suite 01, 18th Floor, Queen's Place
74 Queen's Road Central
Hong Kong

Phone +852.2827.1123
Fax +852.2827.0056
hongkong@flowtraffic.com
flowtraffic.com.cn

**Image Sensing Systems
Europe Limited**

Unit 7, Harley Industrial Park
Great Paxton
St. Neots, Cambridgeshire
PE19 6TA United Kingdom

Phone +44.1480.213820
Fax +44.1480.213822
enquiries@imagesensingeu.com
imagesensing.eu

SPECIFICATIONS

Detection Stations

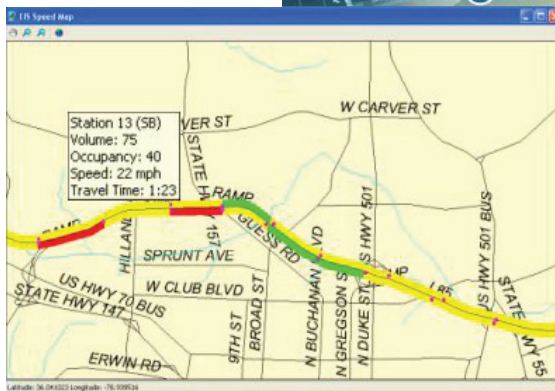
- > Pole-mounted, using existing road-side poles. Includes side-fired RTMS™ and either CDMA/GPRS modem, built-in
- > DSS RF modem or built-in TCP/IP interface
- > Power: typically 4 Watt surge-protected AC or DC
- > Ideal for solar or UPS power
- > Installation time: typically 1 hour
- > Measurement on up to 8 lanes with all-weather high accuracy

Private Network Cluster Hubs Option

- > Collect data from up to 30 Wireless Detection Stations within 15 Km line-of-sight radius, eliminating last-mile connection
- > Power: typically 2 Watt surge-protected AC or DC
- > Store or Forward modes of operation
- > Communicate with TOC via RF modem, TCP/IP or leased-line modems

Traffic Operations Center

- > MS-Windows based software collects real-time data from thousands of stations
- > User-friendly software stores files in real-time and/or archival SQL database
- > Fail-safe data archiving
- > Easy testing of the entire system from the TOC computer
- > Supports TCP/IP and multi-port serial connections
- > Optional speed-map, travel time modules



ISO 9001 Certified

imagesensing.com



Due to ISS' continuous efforts to develop the products that are most responsive to our customers needs, the above specifications are subject to change.

