

the i-Volution i5110-E H.264 Standalone Encoder

The i-Volution i5110-E is Impath's new generation H.264 encoder. The entry level i5110-E introduces advanced features within a powerful and cost effective platform. The i5110-E encoder delivers outstanding performance for advanced video surveillance applications required for combined high resolution and low resolution, full or reduced motion video. The i5110-E encodes multi-stream video, serial data and audio for transport over a standards-based IP network.



Applications

- Security Surveillance
 - Airports
 - Seaports
 - Military
 - Industrial Complexes
 - Unattended Sites
- Transportation
 - City Intersection Monitoring
 - Highways
 - Rail/Metro/Subway

Features

- Fan less design
- Triple streaming to full D1, 25/30 fps
- Bi-Directional Audio
- Contact Sense / Contact Closure

High Resolution - Full Motion – Advanced Compression

The i5110-E provides high quality digitized video over standard IP Ethernet networks using H.264. Every image is encoded in real-time and transmitted up to 25/30 (PAL/NTSC) frames per second. This provides full motion quality video for digital video surveillance applications using one of the most powerful video compression schemes available today.

Triple Streaming

The i5110-E encodes the video input up to full resolution and full frame rate (i.e. up to DVD quality). Multi- Streaming assures that a high quality video can be streamed to large monitors for optimal viewing while a secondary stream can be encoded at lower frame rate and resolution for lower bandwidth applications such as recording, wireless or Internet Streaming.

Reliable

The i5110-E is designed to provide high availability. The enclosure has minimal vents making it virtually "splash proof" and needs no fans for cooling. For operation over extended temperature ranges, the i5110-ET version is environmentally rugged and is conformal coated to ensure maintenance free operation.

Remote Managed

The i5110-E can be managed locally or remotely using Telnet, WEB Browser interface (HTTP) and/or via 3rd Party SNMP network management systems.

i-Volution i5110-E

H.264 Encoder

Control Center
Large Video Display
Monitoring



Internet Streaming



Wireless
 (Very Low Bandwidth)
 H.264
 Reduced fps
 and resolution



Storage

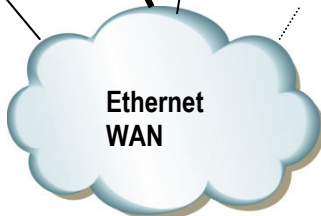


H.264
 Reduced
 fps and/or
 resolution

H.264
 Full Quality
 Pictures

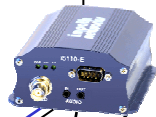
Internet
 Streaming
 Server

H.264



**Triple
 Streaming
 H.264
 Video Streams**

Video
 &
 PTZ



Audio
 Line In/Out



Typical Application

Model	Features
i5110-E	Base H.264 encoder

Video

Protocol: ITU H.264 (ISO MPEG-4 AVC Baseline), MJPEG
 Resolution (D1/CIF/QCIF): NTSC 720x480, 352x240, 176x120; PAL 720x576, 352x288, 176x144
 Frame rate/Bit Rate: Constant and Variable to 30/25 fps; 30kbps to 6Mbps
 Multi-Stream: Triple Streaming up to D1, 30/25fps, Up to 10Mbps aggregate
 Network Connections: User Configurable Unicast and Multicast
 Video Input: Composite Video, 1.0Vp-p, 75 ohm, via BNC

Network Interface

LAN Interface: IEEE 802.3 Ethernet RJ-45, 10/100Base-T, Auto-Sensing
 Protocols: TCP, UDP, IPv4, IGMPv2, RTP, RTSP, DiffServ, SNMPv2, NTP, SAP/SDP, 802.1x (SSL, HTTPS), SMTP

Serial Data

Format: Serial, Asynchronous
 Connectors: 2 Port via DB9
 Interface Protocol: Port 1 RS232, Port 2 RS422
 Data Rate: 300bps to 115kbps

Audio

Interfaces: Line In/Out via 3.5mm mini-jacks
 Audio Standard: G.711
 Mode: Bi-Directional Mono

I/O

Time Synchronization

2x TTL IN / 1 x Relay Out connections via TB
 NTP/SNTP

Alarms

Via SNMP Traps: Video Loss Detection, Video Motion Detection, Contact Sense

Management

Factory Reset: External Reset Button
 Local Status: LED Status Display
 Console: Local via serial port / remote via Telnet
 Web Browser: Microsoft IE ver. 6.0 or higher
 Security: Multi-level - User Name & Password
 Firmware Maintenance: Remote Flash Upload
 3rd Party SNMP: MIBs supplied

Environmental

Operating Temperature: 0 to +50C (32 to +112F)
 5% to 95% Non-Condensing
 Relative Humidity: PCB Conformal Coating
 Protection: EU Directive 20002/95/EC
 RoHS Compliance

Power Requirements

Input Voltage: 10 to 14 VDC / Approx 12W

Physical

Dimensions (WxHxD): 6.62 x 4.26 x 8.85 cm (2.6" x 1.67" x 3.48")
 Weight: Approx. 0.3 Kg (10.6 oz)

Regulatory Approvals

Emissions - EU: EN55022:1998 Class A, EN6100-3-2:1995 & EN6100-3-3:1995
 North America: FCC47 CFR Part 15, Subpart B:1999 Class A
 Australia/NZ: AS/NZS 3548:1995 Class A EN55024

Impath Networks Canada Corporation 42 Payzant Avenue, Suite 100, Halifax, NS Canada B3B 1Z6
 T: 902-468-1010 F: 902-468-1044 impathnetworks.com

Impath Networks Ltd. 9 Camelot Drive, Suite 100, Ottawa, ON Canada K2G 5W6
 T: 613-226-4000 F: 613-226-4602 impathnetworks.com



Copyright 2009 Impath Networks Canada Corporation. Impath is a registered trademark of Impath Networks Canada Corporation. TeleVue, ClientVue and i-Volution are trademarks of Impath Networks Canada Corporation All other trademarks are those of their respective owners. Printed in Canada – 01/09.
 Specifications subject to change without notice or obligation. 35Mbr_175_103_i5110E_i3